

Waterford

House & Land Package by Metricon Homes



Grandview 33 Kingston

From **\$628,855***

Lot 3242 Red Baron Road, Chisholm
Land 544m² House 306m²

The name says it all.

The Grandview is a large, sweeping home. Immediately on arrival you are greeted by a dramatic entry hall with a view straight through to the open plan living area and stunning outdoor room – offering a great sense of light and space. Architecturally dynamic – clear lines are complemented by numerous clever details like wall niches and recessed ceilings, the Grandview is nothing short of remarkable.

Land: \$248,000

House: \$380,855

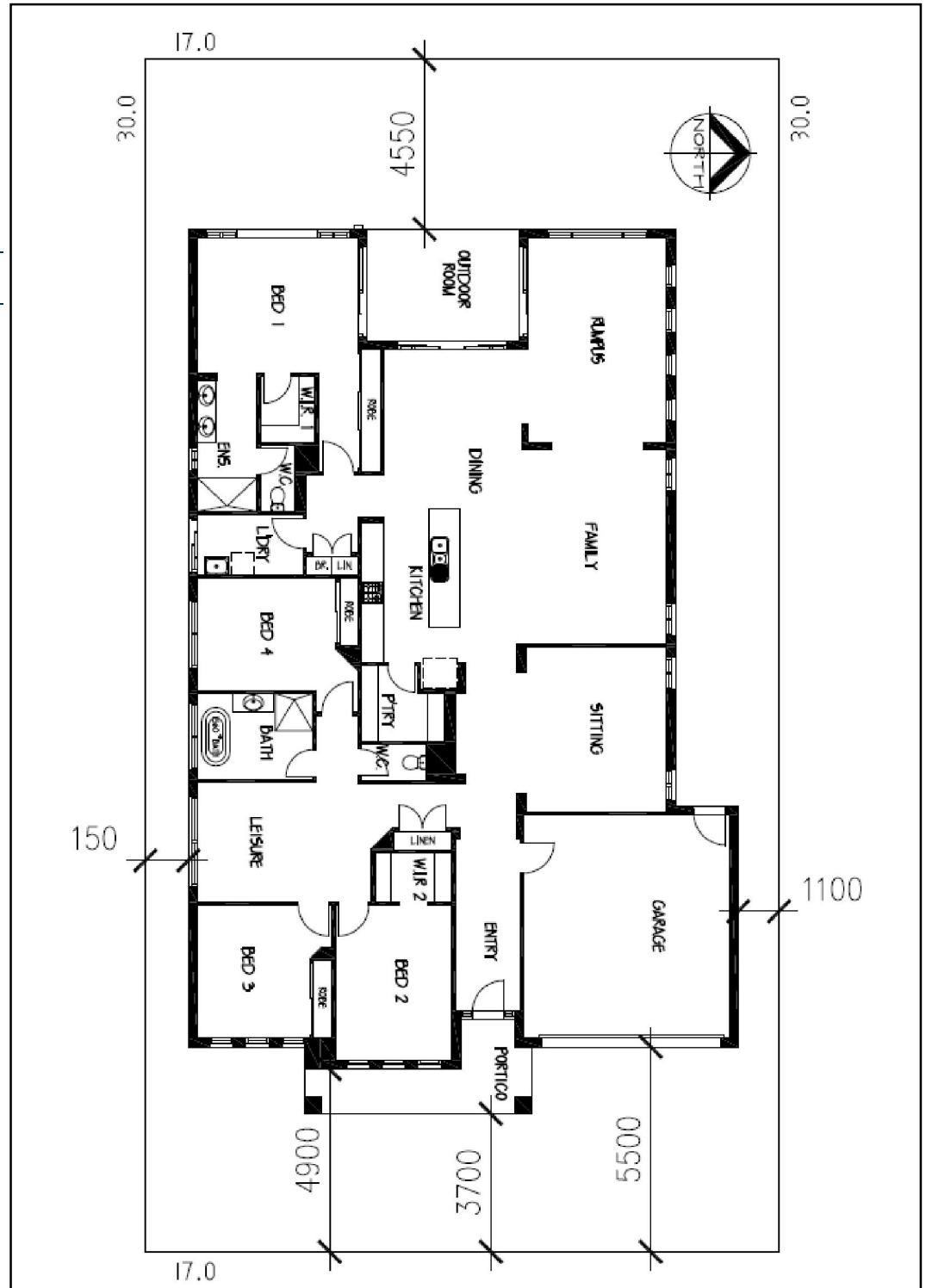
Features:

- Siteworks and Basix Allowance
- Lifetime structural guarantee#
- Steel frame
- Colourbond roof
- Reverse cycle ducted air conditioning
- R4.0 ceiling insulation & R2.0 external wall insulation (excludes garage)
- 450mm eaves
- Floor coverings throughout
- Concrete driveway and path
- Overhead cupboards to kitchen
- Caesarstone® benchtops to kitchen
- Caesarstone® benchtops to bathrooms
- Upgraded stainless steel appliances

Sales & Information Centre, 2 Settlers Boulevard, Chisholm
T: 1300 073 095 W: waterfordliving.com.au

Grandview 33 Kingston 3242 Red Baron Road, Chisholm

Land	544m ²
House	
Living	250.56m ²
Outdoor	12.27m ²
Porch	6.47m ²
Garage	36.40m ²
Total	305.70m²



Images may include upgrade items and may depict fixtures, finishes and features not supplied by Freedom by Metricon such as landscaping, paths and fencing. Accordingly, any prices in this flyer do not include the supply of these items. *Price is based on Metricon's Freedom specification and standard inclusions. Package price excludes external lighting, telephone service, customer account opening fees, stamp duty on land, legal fees and conveyancing costs including titles and property report. ^Typical Site cost allowance is included in the price. Additional site cost may apply if site survey and soil test indicates footings and site works different to those expected for the location. Floor plan is a representation of a Traditional façade unless otherwise stated. For detailed pricing and inclusions talk to a Metricon Sales Consultant. Land supplied by developer. Land Prices and availability are subject to change without notice. All home and land packages are subject to developer approval. Metricon reserves the right to alter the images or descriptions without notice. # For details on our Lifetime structural guarantee visit www.metricon.com.au/terms/structural-guarantee. *Air-con unit size, zones and outlets determined by home size and design. Tender must be accepted within 14 days of presentation for promotional offer to be valid. NSW Contractor's Licence: 174699C Package Printed Date: 11/10/2019. Build region: North Coast

Lawrence Lee, Metricon Homes
25 Heritage Drive, Chisholm
T: 0499 500 281 W: metricon.com.au