

Waterford

House & Land Package by Simonds Homes



4

2

2.5

2

Flinders, Portland Facade

From **\$563,465***

Lot 3243

Waterford, Chisholm

Land 560m² House 26.69m²

A Unique Family Home with Style

The stylish Flinders is a unique home with great features and a distinct family focus. The concept behind this striking home is to provide each family member with individual space, while offering communal areas that bring people together in a relaxed and comfortable way.

Land: \$252,000

House: \$311,465

Features:

- Architecturally designed
- Located in a quality address
- Sites and Basix Allowance
- Flooring throughout
- Driveway

Ts & Cs: Images shown are for illustrative purposes and may not represent the final product. Prices are based on availability and price of land. Simonds reserves the right to alter any price or substitute any home without prior notice. All house and land packages are subject to developer's approval. In the event that a Homesite does not have Survey Pegs in place to identify lot boundary then an additional charge will be added to the cost of the house.

Sales & Information Centre, 2 Settlers Boulevard, Chisholm

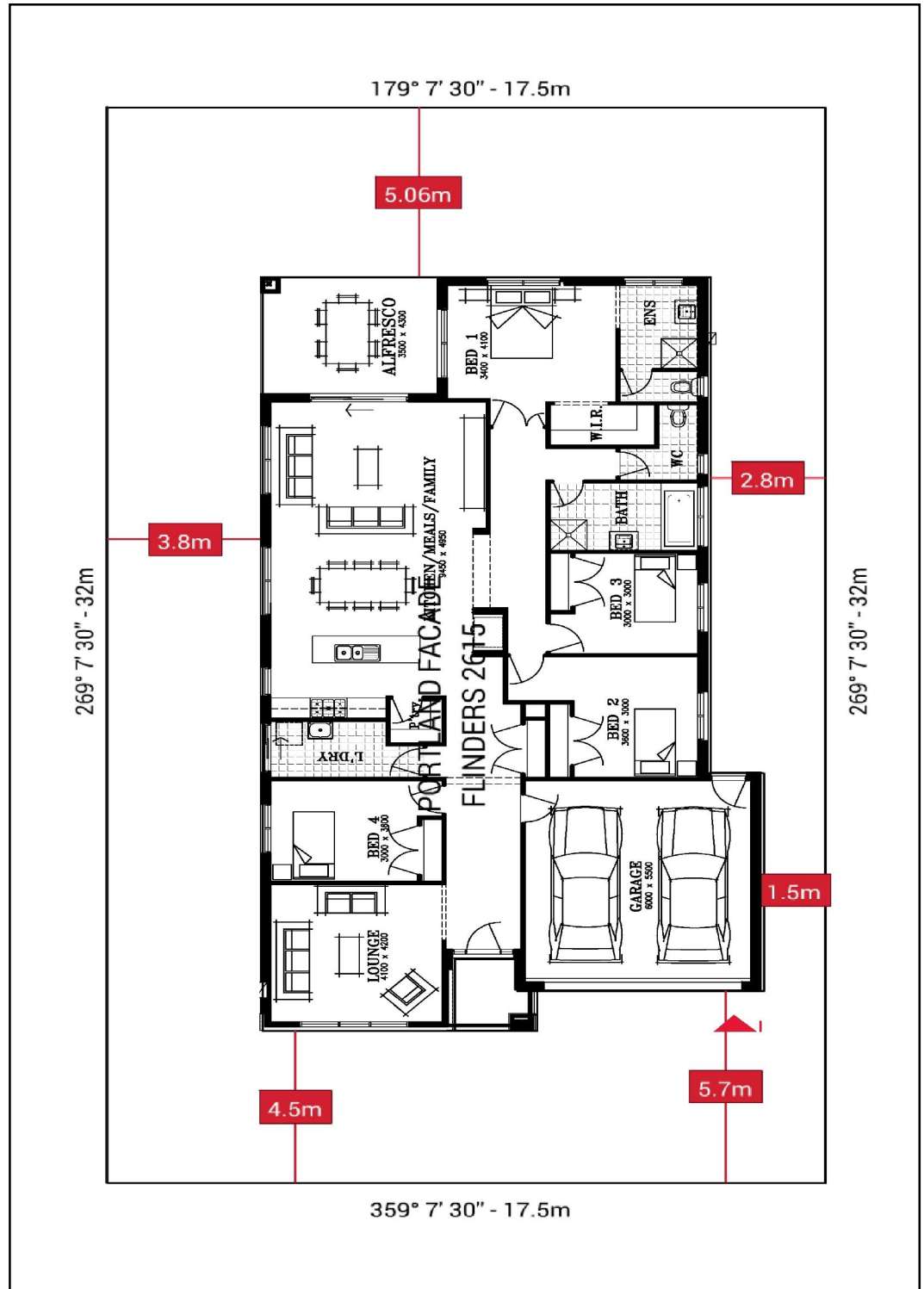
T: 1300 073 095 W: waterfordliving.com.au

Flinders, Portland Facade Lot 3243 Waterford, Chisholm.

Land	560m ²
House	26.69m ²
Living	192.63m ²
Porch	3.87m ²
Alfresco	15.00m ²
Garage	36.43m ²
Total	247.93m²

This Package Includes:

- Allowance for Site Costs, Basix and Connections
- Floor Coverings Throughout
- Sealed Coloured Through Concrete Driveway
- 40mm Stone Benchtop to Kitchen
- Ducted Air Conditioning
- 2590 Ceilings to Ground Floor
 - 20 LED downlights
- Set of 2 Pot Drawers to the Kitchen
- 20mm Stone Benchtop to Bathroom and Ensuite
- Soft close drawers and cupboards to kitchen
- Clark Monaco Undermount Sink
- Colorbond Panel Lift Garage Door
- 2700mm 3 Panel Stacker Door to Alfresco
- 900mm Built in Oven and Gas cooktop



Simonds Homes, 11-13 Seasons Circuit, Chisholm

T: 0422 235 512 W: www.simonds.com.au