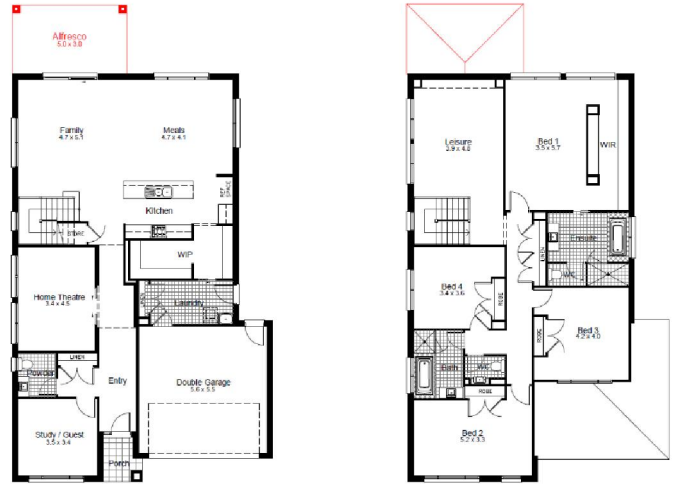


# Waterford

## House & Land Package by Clarendon Homes



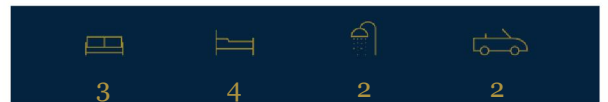
### Boston 36 | Gallery Facade

Lot 3238  
Red Baron Rd, Chisholm NSW 2322

Land 544m<sup>2</sup> House 336.2m<sup>2</sup>

When you settle in at Waterford, you'll be part of a warm, welcoming, established community.

Surrounded by 74 hectares of green space, waterways and wetlands, beautifully designed and built homes create an ambience of casual elegance, while modern shopping and transport links, exceptional sports facilities, and a host of quality schools – including Waterford's own St Bede's College, St Aloysius Primary, and a childcare centre – are all close at hand.



From **\$740,000\***

House: \$492,000 \*

Land: \$248,000

#### Features:

- Standard Site Costs
- Developer Requirements
- Fully Ducted Air Conditioning
- 2600mm Ceiling Height
- 20mm Stone Kitchen Bench Top
- Soft Close Drawers & Doors to Kitchen
- Elba Appliances including 2 x 600mm Ovens
- Undermount Sink
- Shower Niches to Main bathroom and ensuite
- Soft Close Doors to Vanity
- Lifetime Structural Guarantee
- \$25,000 Colour Studio Voucher
- AND MUCH MORE...

Sales & Information Centre, 2 Settlers Boulevard, Chisholm.

T: 1300 073 095 W: [waterfordliving.com.au](http://waterfordliving.com.au)

