

Waterford

House & Land Package by Bartlett Homes



Protea 29 – 5 Bedroom

Lot 3142

Road 12, CHISHOLM

Land 576m² House 269m²

Bartlett Homes presents to you the Protea 29 – 5 Bedroom, complete with a covered Alfresco area.

This beautifully designed home has several different floor plans to choose from, depending on your requirements. Features Walk in Robe and Ensuite.

With a fantastic team of local tradesmen that have a high standard of attention to detail, your home will have that priceless difference and quality.

Visit the Harvest Display Home
22 Harvest Boulevard
Chisholm, NSW, 2320

Sales & Information Centre, 2 Settlers Boulevard, Chisholm.
T: 1300 073 095 W: waterfordliving.com.au

2

5

2

2

From **\$606,339***

Land: \$254,000

House: \$352,339

Features:

- Provisional Site Costs & Basix
- Colorbond Roof
- Flyscreens to all windows and Sliding doors
- Overhead Cupboards
- Concrete Driveway
- Automatic Garage Door
- Actron Ducted Air Conditioning
- 900mm Westinghouse Appliances –
- Cooktop, Oven, Rangehood
- Dishlex Dishwasher
- Kitchen Caesarstone Benchtops with Waterfall Ends to island (20mm)
- Floorcoverings throughout
- PLUS Much more

Waterford

House & Land Package by Bartlett Homes

Protea 29 – 5 Bedroom Lot 3142 Road 12, CHISHOLM.

Land	576m ²
House	269m ²
Living	213.17m ²
Porch	3.17m ²
Alfresco	15.41m ²
Garage	37.96m ²
Total	269.71m²

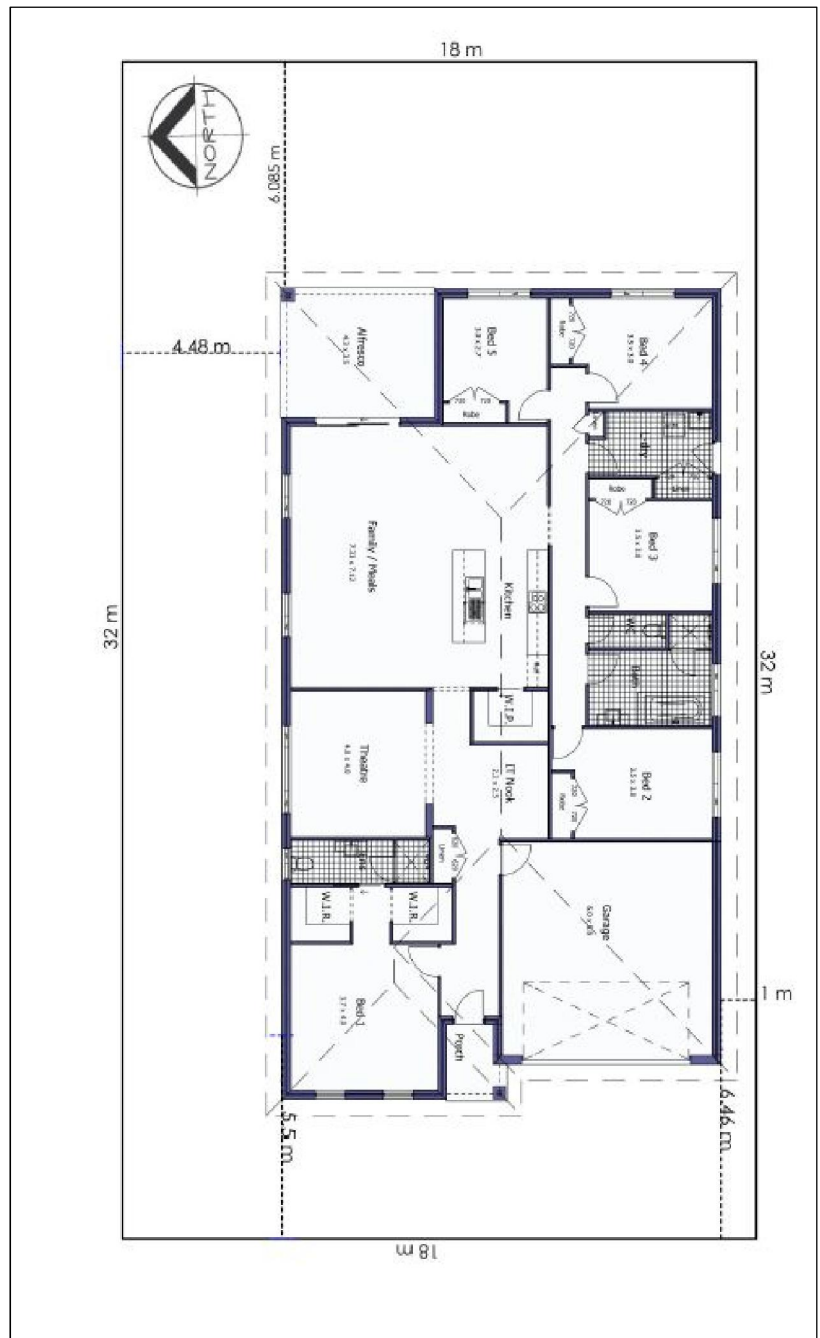
Contact:

Jackie Barton

(02) 4046 9832 / 0419 417 755

E: jackie@bartletthomes.com.au

*House & Land package pricing and availability are correct as at November 2018 and are subject to change without notice. House and Land package pricing and availability is based on a specific house and land combination. The price is based on the relevant builder's standard specifications and inclusions for the house as provided by the builder.



Showing Standard Façade Plan

Bartlett Homes,
53 New England Highway,
Maitland, NSW, 2320
P: 49324009 W: www.bartletthomes.com.au

